

Center for Writing Excellence
Fall 2010- S-

The evidence is beginning to suggest that, given the current resources, both clients and consultations are beginning to plateau during the academic year. The Center welcomes between 500-650 clients for 1300-1600 consultations each semester.

Summer numbers continue to fluctuate wildly, largely contingent upon Summer staffing for Liberal Arts writing courses. Faculty with training and background in professional writing tend to emphasize writing center use substantially more than other Liberal Arts writing faculty.

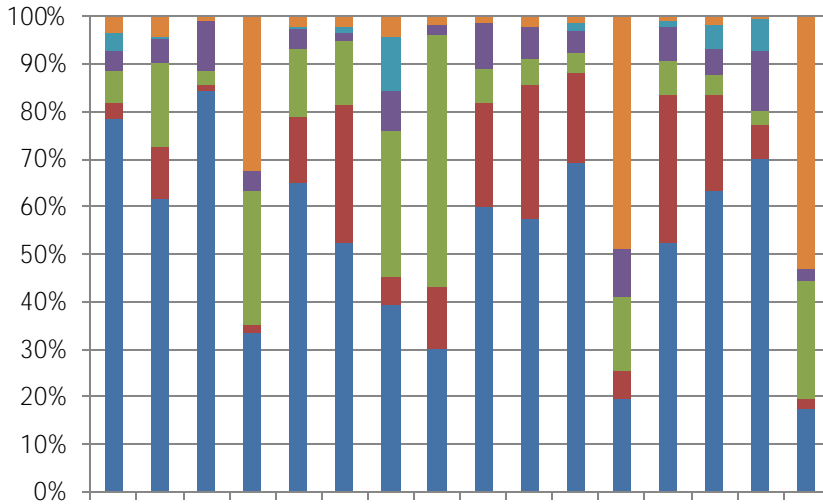


Figure 4: Consultations by College

The high level of “Other” tutorials in each Summer II session is comprised of Presidential Mentors Academy consultations. Although their primary course has an NU prefix, it is interdisciplinary and does not count toward the Nursing degree.

Figure 5: Consultations by Discipline in the College of Arts & Sciences

Figure 6: Clients by Number of Tutorial Visits

While the number of clients who visit one-time is decreasing, the number of multiple visit clients is

Consultation Evaluations

Clients of the University Writing Center have the option of providing an evaluation of their experience via an electronic survey. From Fall 2007 through Summer II 2009, clients were asked to submit paper evaluations. These resulted in unusually high, yet unusually positive overall evaluations.

Since the institution of electronic surveys, the sample size has declined dramatically, although comments are much more candid than when evaluations were completed in the center. The extremely low sample size renders these evaluations useless for making general statements about writing center quality, atmosphere, and service, although they retain value for individual consultant training and evaluation purposes.

Clients are invited on the writing center website and in writing center orientations to provide the director with feedback on center quality, atmosphere, and service. On the rare occasions when criticism has been submitted, the center staff has worked to clarify misunderstandings and improve office practices and communications policies and strategies.

Consultation Cost Per Semester

The cost of a consultation each semester may be estimated using the formulas described below.

Academic Year (Fall and Spring):

$(\text{Consultant Wages Per Semester} + \frac{3}{8} \text{ Director Salary} + \frac{2}{5} \text{ CWE Non-Wage Budget}) / \# \text{ Consultations Per Semester} = \text{Approximate Consultation Cost Per Semester}$

Summer I & II (combined):

$(\text{Consultant Wages for Summer} + \text{Director Summer Pay} + \frac{1}{5} \text{ CWE Non-Wage Budget}) / \# \text{ Consultations Per Semester} = \text{Approximate Consultation Cost During Summer}$

Table 3. Approximate Cost Per Consultation

Term	Consultant Wages	Director Pay	CWE Budget	Consultations	Cost
Fall 2007	5,519.86	20,930.25	2,107,600.25		

Table 4 lists faculty and courses that integrate writing center workshops and support each year. This is not an all-inclusive list of clients, but these faculty nearly always place workshop requests or insist upon mandatory consultations.

Table 4. Instructors and Courses with Recurring Writi

FLPL Creative Writing Workshops

Florence-Lauderdale Public Library Creative Writing Workshops meet biweekly, 5-6 times during a semester, and are conducted in Spring, Summer, and Fall. Instruction is volunteer, and there is no fee for participation. Expenditures are limited to notebooks, paper, pens, and photocopies. Attendance records since inception are provided below, including the Memoir Workshop that was part of the One Book Program during Fall 2008.

Semester	Registered Participants	Appeared on First Day	Completed Program
-----------------	------------------------------------	----------------------------------	------------------------------